

# SUPPORT RESOURCES

## FOR BIOLOGY STUDENTS

[French version](#)

The **FREE** resources below have been put in place for **YOU**. Do not hesitate to contact these services. **NO MATTER WHAT THE SITUATION**, you will find a **CAREFUL LISTENER** and **APPROPRIATE SUPPORT**.

The EDI+ Committee of the Department of Biology

## MENTAL HEALTH



### Psychological care service

Emergency : 819 821-7666  
Email : spo@USherbrooke.ca

### Info-Social 811

Emergency 24/7  
- On campus : 9-811  
- Off campus : 811

### Dialogue

\* Available to students insured with ASEQ

### University of Sherbrooke Security Department (24/7)

Main Campus : 811 (UDS device)  
or 819 780-0811  
Health Campus : 511 (UDS device)  
or 819 346-1110, ext. 14121

### Pair-Mission

Website :  
<https://lapairmission.association.usherbrooke.ca/>

### Suicide Prevention Center

Emergency 24/7  
Phone : 1 866-APPELLE  
(1 866 277-3553)

## RESPECT AND HUMAN RIGHTS

### Advisory Team for personal respect and treatment

Phone : 819 821-7410  
Email: Respect@USherbrooke.ca

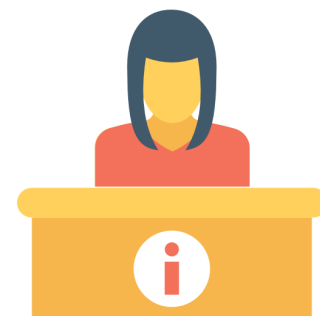
### EDI+ Committee of the Department of Biology

Specifying your name(s) and gender

### Ombudsman

#### Protecting the rights of students

Phone : 819 821-7706 /  
free of charge 1 800 267-8337, ext. 67706  
Email: ombudsman@USherbrooke.ca



## EDUCATIONAL AND CAREER GUIDANCE AND SUPPORT STUDIES



### Integration program : Disabilities

Phone : 819 821-7997  
free of charge 1 800 267-8337, ext. 67997  
Email : prog.integration@USherbrooke.ca

### Training and career advice

Phone : 819 821-7666  
Email : spo@USherbrooke.ca

Learning Support Center in Biology

# SUPPORT RESOURCES FOR BIOLOGY STUDENTS

## FINANCIAL ASSISTANCE

### FORCE Foundation

Phone : 819 821-7665

free of charge 1 800 267-8337

Email : prog.bourses@USherbrooke.ca

### Financial Assistance Service

Phone : 819 821-7665

### Student jobs



## GLOBAL HEALTH



### Health Clinic

Minor emergency appointment : 819 821-7752  
on previous day between 2:00 and 3:00 pm or on the  
same day between 7:30 and 8:00 am.

Regular appointment : 819 821-7667, option 4  
between 8:00 and 11:00 am or between 2:00 and 3:00 pm  
(except Friday)

### Dialogue

\* Available to students  
insured with ASEQ

### Student support

volunteers  
(AVE in French)

## OTHER ASSISTANCE RESOURCES

For all other community resources in the Eastern Townships, I consult the [Ressources Communautaires - Estrie](#) page on the University of Sherbrooke's Psychological Care Service website.

